

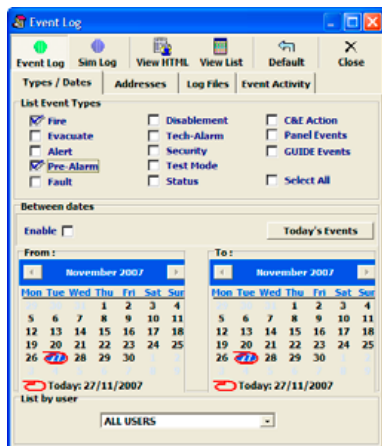
Graphical User Interface for fire Detection Equipment

Product Overview

- Syncro fire control panels can send data to, and be controlled by, the Guide system providing a single point of co-ordination for all alarms.
- The powerful 32 bit programme features a standard Windows look and feel and runs under Windows® 2000 or XP.
- The system is highly configurable in terms of the style of presentation so that the end user can be presented with maps, text, photographs, audio or a combination of all as required.
- User profiles allow the system manager to control the facilities available to each individual system user.
- A comprehensive history logging and reporting system allows analysis of events and trends to be identified to reduce unwanted alarms.
- Easy to programme and simple to use, Guide provides a cost effective solution for fire alarm management at many levels.



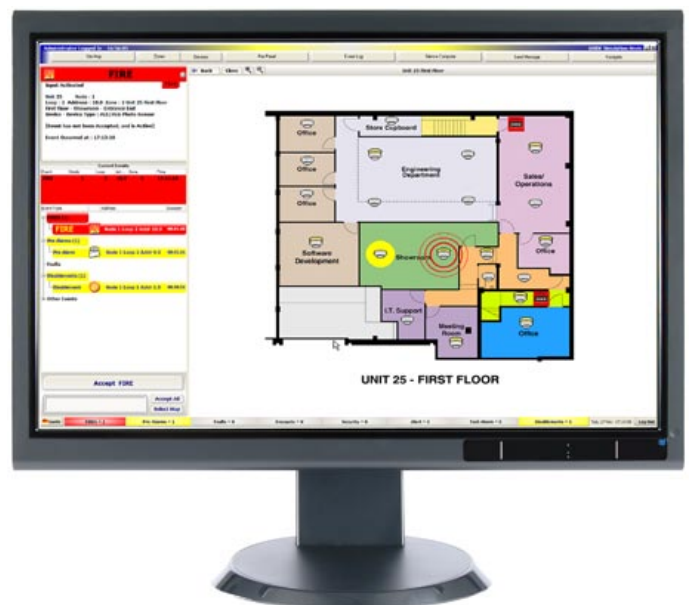
Virtual Panel - allows direct control



Powerful Event log filtering

Features

- Choice of text, graphic, event list display when an event occurs
- Versatile event analysis
- Total history archive
- Easy to programme
- Secure system
- Cost effective compared to other systems
- Simple to use
- Unlimited map linking & zoom facility
- Support for 100's of graphics
- Display and control for multiple panels
- Event history explore and export facility to text or HTML documents



Range

Product Code Description

G1001	GUIDE software - Single panel package
G1004	GUIDE software - 4 panel package
G1008	GUIDE software - 8 panel package
G1016	GUIDE software - 16 panel package
G1032	GUIDE software - 32 panel package
G1064	GUIDE software - 64 panel package

Note: Guide For use with Syncro Panels. Syncro 6 & 8 loop panels are considered 2 panels in the packages above.

Specifications

Technical

	Recommended Minimum	Notes
Processor	Intel Pentium 1Ghz	The faster the better, 2Ghz will provide future proofing.
Operating system	Windows® XP/Vista	Will operate under Windows® 2000
Memory	256MB minimum	The larger the better.
Hard disk	10GB minimum	>20GB would be better.
Graphics	1024 x 768 16M colours	The driver must allow this mode with large fonts. Separate Graphics card with 256MB graphics memory recommended
Sound card	Any PC sound card	
Loudspeaker	Any PC speakers	More convenient if built into PC.
Monitor	Any that supports above graphics driver	17 inch minimum recommended, the larger the better. (1024 x 768)
Pointing device	Mouse essential	Third button and wheels are supported. Touch screen option supported
Printer	Optional	Any type.
Parallel port	Optional	Required if parallel printer to be used.
Serial ports	One RS232 per network	Isolated converter supplied for connection to fire alarm system.
CDROM drive	Any	Required for installation of software and updates.
Backup drive	CD Writer	To back up history.

Note: Guide will be operating 24 hours a day for many years.

It may be desirable to include on site PC maintenance as part of the package.

Note: The Syncro panel to which the Guide system is connected must not have a printer fitted.

