

Remote Control / Configuration of FCPs „Solution F1 / F2”

B01370-00



Description

Analogue Telephone modem for remote control software of the „Solution F1/F2”

- Supported by the configuration software it is possible to operate and analyse the fire control panel by telephone modem
- For fitting in a slot of the main board
- Power supply by the main board

Technical specifications :

Quiescent current: 140 mA
Ambient temperature: 0 – 55° C
Data rate: max. 56.000 bps
Dimensions : 56 x 56 x 14 mm

B01373-00



ISDN Telephone modem for remote control software of the „Solution F1/F2”

- Supported by the configuration software it is possible to operate and analyse the fire control panel by telephone modem
- For fitting in a slot of the main board
- Power supply by the main board

Technical specifications :

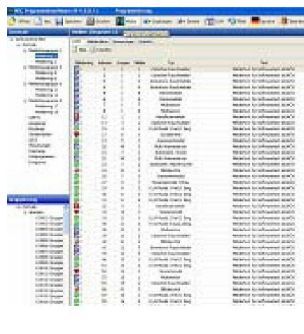
Quiescent current: 40 mA
Ambient temperature: 0 – 55° C
Data rate : max. 64.000 bps
Dimensions : 56 x 56 x 14 mm

B01390-00

Download cable for updating of loop cards and conventional detector cards of the "Solution F1"

FDT software necessary (free of charge)

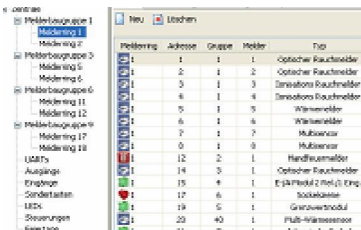
B01395-00



Configuration software for Windows

- Windows Explorer based software and so it is very easy and fast to handle
- Implemented by Windows.NET
- For configuration of detectors, zones, inputs, outputs, loops and spurs
- For analysing of analogue values / cable resistors / statistics / event memory
- Drag- and drop functionalities
- CD-ROM with auto start and setup

B01396-00



Modem software (Remote control software) for “Solution F1” panel

- For use with modem B01370-00 or B01373-00 (please order modem separately)
- Panel firmware module to use full functional Windows software B01395-00
- For configuration of detectors, zones, inputs, outputs, loops and spurs
- For analysing of analogue values / contamination / statistics / event memory